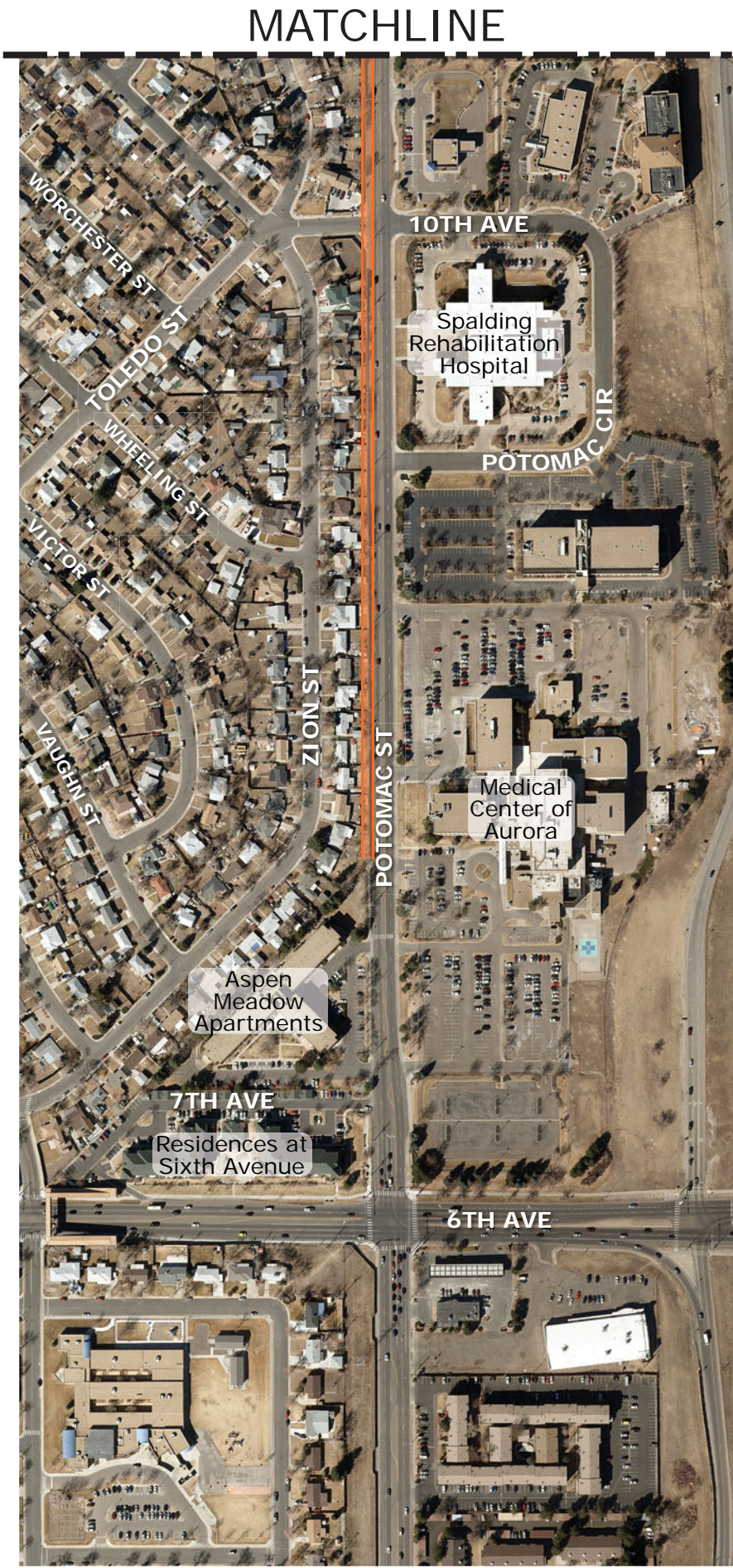


POTOMAC STREET UNDERGROUNDING PROJECT AREA MAP

Project Scope:

Partial overhead utility relocation to the west side of Potomac, improved west side street lighting, and installation of paved sidewalks.



MATCHLINE

Key:
Project Focus Area

NOTE:
Project focus area highlighting is intended to show approximate project limits and is exaggerated for ease of viewing. This graphic does not represent limits of construction or impacts.



NORTH